

EXPLODED VIEW

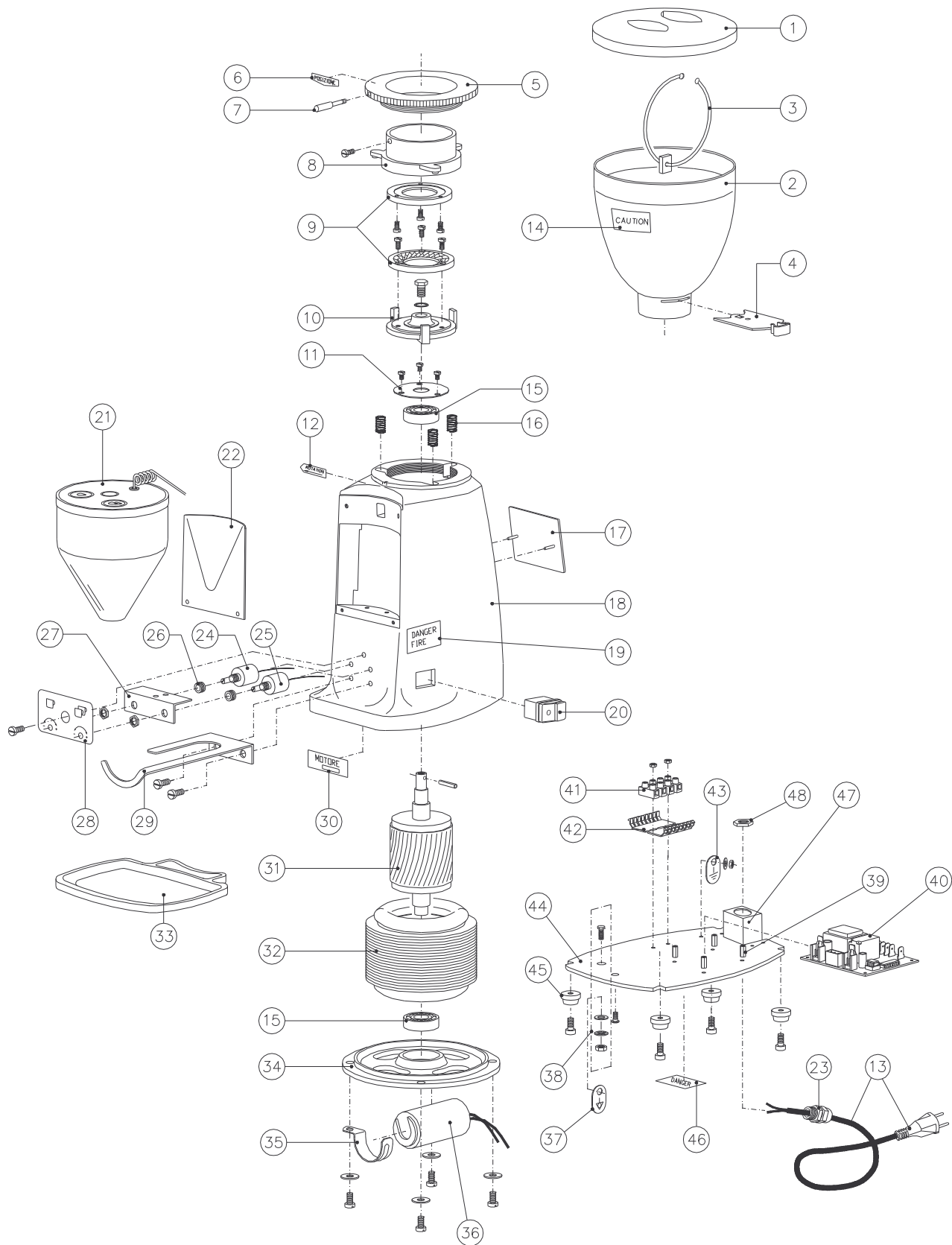
GRINDER DOSER MINI Electronic mod. A

ESMEDOS04.00 09/2008



MAZZER LUIGI s.r.l.
VIA MOGLIANESE, 113
30030 GARDIGIANO DI SCORZE' (VE)
ITALIA
TEL. +39 041 5830200 r.a. - FAX +39 041 5830060
E-mail: mazzer@mazzer.com - <http://www.mazzer.com>

N.	DESCRIPTION	CODE	Q.	NOTES
1	Hopper cover	SMI0COD01	1	
2a	Mini Hopper	SMI0CAE03	1	
2b	Mini Hopper 320 gr	SMI0CAE02	1	
3	Magnet with ring	S00SCAC01	-	Optional
4	Hopper locking slide	SMI0SEB01	1	
5	Coffee grinding adjustment disk	SSJ0GHA02	1	
6	Label: Coarse-fine / Adjustment initial position	S000ETA03	1	
7	Grinding adjustment disk handle	SSJSPEA04	1	
8	Upper grinding blade holder (low)	SSJ0POA02	1	
9	Grinding blade set (rif. 189D)	FMA00189D	1	
10	Lower grinding blade holder	SSJ0POA04	1	
11	Super Jolly cover bearing	SSJ0COA01	1	
12	Label "Motor rotation"	S000ETA00	1	
13a	Electric cable - "Italy" single phase	S000CAD01	1	
13b	Electric cable - "Europe"	S000CAD04	1	
13c	Electric cable - "USA"	S000CAD05	1	
13d	Electric cable - "Australia"	S000CAD07	1	
13e	Electric cable - "Great Britain"	S000CAD08	1	
13f	Electric cable - "Israel"	S000CAD10	1	
13g	Electric cable - "Switzerland"	S000CAD06	1	
13h	Electric cable - "China"	S000CAD16	1	
13i	Electric cable - "Argentina"	S000CAD18	1	
13j	Electric cable - "Korea"	S000CAD19	1	
14	Label: "Caution - Hopper"	S000ETA15	1	110V/60Hz versions 100V/50-60Hz versions 220V/60Hz versions
15	Bearing 6202 DDU CM	S000CUA07	2	
16	Grinding adjustment spring	SSJ0MOB01	3	
17	"Mazzer 4M" plate	S000TAA02	1	
18	Body for Mini electronic	SME0CAA02	1	
19	"Danger" plate	S000TAA21	1	110V/60Hz versions 100V/50-60Hz versions
20	Green light switch N/N/V	S000INA12	1	
21	Funnel group (1-2 doses)	-	1	
22	Motor cover	SMI0FRA02	1	
23	Cable locking PRO 1106 PG11 black	S000PAB03	1	
24	Multiturn potentiometer with wiring - black	S000POT01	1	
25	Multiturn potentiometer with wiring - red	S000POT02	1	
26	Cable locking 40-80-20 black	S000PAB05	2	
27	Fixing plate for potentiometer	S000PIA06	1	
28	Label "1-2 doses adjust"	S000ETA21	1	
29	Fork for filterholder rest (1-2 doses)	S000FOB08	1	
30	Motor label	-	1	
31	Mini rotor	SMI0ROA00	1	
32a	Coiled stator single phase 220-240V/50Hz	SMISPAE01	1	220-240V/50Hz versions
32b	Coiled stator single phase 110V/60Hz	SMISPAU01	1	110V/60Hz versions
32c	Coiled stator single phase 220V/60Hz	SMISPAS01	1	220V/60Hz versions
32d	Coiled stator single phase 100V/50-60Hz	SMISPAJ00	1	100V/50-60Hz versions
33	Drip tray	SMI0PIB03	1	
34	Motor cap	SMI0CAB05	1	
35a	Capacitor locking clamp 32	S000GRB03	1	Capacitor 6,3 uF
35b	Capacitor locking clamp 40	S000GRB05	1	Capacitor 20 uF UL
36a	Capacitor 6,3 uF	S000COE17	1	220-240V/50Hz versions 220V/60Hz versions
36b	Capacitor 20 uF UL	S000COE13	1	110V/60Hz versions 100V/50-60Hz versions
37	"External unipotential clamp" plate	S000TAA19	1	CE versions
38	External unipotential clamp	-	1	CE versions
39	Metallic spacer DD10 H 3050 10	S000DIB02	4	
40a	Board for double timer 230V/50Hz	S000SCT01	1	220-240V/50Hz versions 220V/60Hz versions
40b	Board for double timer 110V/60Hz	S000SCT08	1	110V/60Hz versions
40c	Board for double timer 110V/50-60Hz	S000SCT12	1	100V/50-60Hz versions
41	Terminal blocks	P000MOA04	-	
42	Under terminal board	P000SOT02	-	
43	"Ground" plate	S000TAA18	1	
44	Bottom plate for Mini electronic	SME0PIN01	1	
45	Support legs	S00SPIA01	4	
46	Label "Danger"	S000ETA14	1	110V/60Hz versions 100V/50-60Hz versions 220V/60Hz versions
47	Mini cable locking support	SMI0SUA00	1	
48	Nut for cable locking 3213B	S000DAA02	1	



N.	DESCRIPTION	CODE	Q.	NOTES
1	Funnel for 1 – 2 doses	S000IMB01	1	
2a	Gasket for funnel (50Hz)	S00SGUA01	1	220-240V/50Hz versions
2b	Gasket for funnel (60Hz)	S00SGUA02	1	110V/60Hz versions 100V/50-60Hz versions 220V/60Hz versions
3	Mini coffee outlet guard	SMI0PRB01	1	
4	Bush	S000BOC06	2	
5	Push button holder lid	S000COG01	1	
6	Ring O.R. 2450 NBR	S000ANA08	1	
7	Card for push button with spiral cable	S000SPU01	1	
8	Membrane holder disk	S000DIM01	1	
9	Adhesive membrane	S000MEM01	1	
10	Cable locking 40-80-20 black	S000PAB05	1	
11	Card for push button assembly	S00SSPU01	1	

